

User Manual
of
DS-6104HCI
Net Video Server

Index

| | |
|--|-----------|
| CHAPTER 1 INTRODUCTION..... | 4 |
| 1.1 DS-6104HCI FUNCTIONS AND FEATURES..... | 4 |
| 1.2 COMMON APPLICATION | 5 |
| CHAPTER 2 INSTALLATION..... | 6 |
| 2.1 HARDWARE INSTALLATION | 6 |
| 2.1.1 <i>Installation steps</i> | 6 |
| 2.1.2 <i>Installation notice</i> | 6 |
| 2.2 PANEL DESCRIPTION..... | 6 |
| 2.3 THE PIN DEFINITION OF PHYSICS INTERFACES | 7 |
| 2.3.1 <i>PIN definition of RS-232 serial interface</i> | 7 |
| 2.3.2 <i>PIN definition of RS485 serial interface</i> | 10 |
| 2.3.3 <i>PIN definition of Ethernet interface</i> | 10 |
| CHAPTER 3 VIDEO SERVER SETUP | 11 |
| 3.1 PARAMETER SETUP THROUGH RS-232 SERIAL PORT | 11 |
| 3.1.2 <i>Shell Commands under Hyper Terminal</i> | 14 |
| 3.2 VIDEO SERVER HDD FORMAT..... | 17 |
| 3.3 VIDEO SERVER RECORDING SETUP | 17 |
| 3.4 PTZ CONTROL | 17 |
| 3.5 REMOTE SETUP VIDEO SERVER PARAMETERS | 18 |
| CHAPTER 4 UPGRADE FIRMWARE..... | 19 |
| 4.1 USE SHELL COMMAND AND TFTP SERVER..... | 19 |
| 4.2 USE CLIENT SOFTWARE TO UPGRADE FIRMWARE..... | 22 |
| CHAPTER 5 PPPOE DIALUP OPERATION | 25 |
| 5.1 USING PPPOE TO ESTABLISH CONNECTION..... | 25 |
| 5.2 CLIENT ACCESS DVS WHEN USING PPPOE | 26 |
| CHAPTER 6 FREQUENT ASK QUESTIONS..... | 28 |
| APPENDIX A DS-6104HCI SPECIFICATIONS..... | 29 |
| APPENDIX B GOOD LIST..... | 30 |
| APPENDIX C CUSTOMER INFORMATION CARD | 31 |

Thanks for purchasing the products of Hikvision. If you have any requests or questions, please contact us immediately.

This manual is applicable to DS-6104HCI Net Video Server.

This manual may contain some technically incorrect places or printing errors. The contents will be updated on a regular basis without additional specific notice. The updates will be added to the new version of this manual. We will readily improve and update the products or procedures described in the manual.

Chapter 1 Introduction

DS-6104HCI net video server adopts embedded Linux operation system (RTOS) and TI DaVinci processor that is completely independent of PC platform, and efficiently improves system performance. Firmware is burned into the FLASH, making the system more steady and reliable.

DS-6104HCI net video server has the function of compressing the video signal and audio signal simultaneously into H.264 compression standard; transmitting the compression stream through network; real-time video and audio preview; supporting stream protocol (RTP/RTCP, RTSP), IE browser, bi-directional voice talk and multilingual etc.

Notes:

DS-6104HCI: 4 channels video inputs and 4 channels audio inputs. All channels can support CIF resolution real time (25FPS for PAL or 30FPS for NTSC).

1.1 DS-6104HCI functions and features

➤ Basic Function:

1. High speed & high compression ratio of H.264 video hardware real-time compression;
2. Multiple security level leads to high system safety;
3. Support one RS-485 interface that can be used for controlling pan-tilt-zoom and translucent channel input.

➤ Compression Function

1. Support four channels video (PAL/NTSC) signal, and can be real-time hardware compressed in 25F/S (PAL) or 30F/S (NTSC) CIF resolutions independently. Video is compressed with H.264 standard, and it **supports not only variable bit rate but also variable frame rate**. When choosing video image quality, you can also limit the bit rate of the compression code.
2. Support changeable OSD position, the date and time can be added automatically.
3. Support LOGO, the position is changeable in the video image.

➤ Network Function

1. Support one 10M/100M Ethernet compatible interface;
2. Support TCP/IP protocols; support video, audio, alarm, voice data, serial device data transmission through TCP/IP network; build-in WEB browser, support IE access.
3. Support pan-tilt-zoom control such as PTZ, iris and focus;
4. Support remote upgrading and maintenance;
5. RS-485 interfaces support transparent transmission mode, and remote hosts can control serial devices through it;

1.2 Common application

Network digital surveillance, such as ATM machine, factory and the bank etc;

Remote monitoring service for prison, nursery and school;

Intelligent gate system (dynamic record the people in and out);

Intelligent building and community;

Uncared-for system of electric power station or telecom base station;

Outdoor equipment monitoring;

Bridge, tunnel and cross road-monitoring system;

Pipeline, warehouse monitoring;

24 hour traffic monitoring;

Remote monitoring of forest, water and river, etc

Chapter 2 Installation

2.1 Hardware installation

2.1.1 Installation steps

1. Open packing case, and check the integrity;
2. Take out things needed during installation;
3. Connect cables needed (video signal input cable, audio signal input cable, RS485 cable and cable for LAN);
4. Take out stabilizer power supply and power on.

2.1.2 Installation notice

Please read the following notice carefully. If you have any question, please contact us.

Notice:

1. After Opening the packing box, please check carefully to confirm that the goods in it are consistent with list;
2. Please read user manual carefully before installation;
3. Please power-off all related equipments before installation;
4. Please check the voltage of power supply to avoid voltage mismatch;
5. Installation environmental: Do not use it under humidity and high temperature; to keep ventilation vent freely, avoid being walled up; keep them horizontally, avoid setting up in the vibration surroundings.

2.2 Panel description

Front panel:



Interface Instruction (From left to right in turn)

1. Tx/Rx indicator lamp;
2. Link indicator lamp;
3. Power supply indicator lamp;

Back panel:



Interface Instruction (From left to Right in return):

1. Power jack is connected with 12V direct current through voltage stabilizer; Please use the stabilizer power supply correctly;
2. UTP network connector;
3. 4 external alarm input and 2 relay output;
4. Standard RS-485 serial port RJ45 socket and Standard RS-232 serial port RJ45 socket;
5. 4 channels video input and audio input;
6. One line in audio input
7. One audio output.

2.3 The pin definition of physics interfaces

2.3.1 PIN definition of RS-232 serial interface

The DVS has one RS232 standard serial interface, with RJ-45 connector. Its pin definition is as follows ('I' means input, and 'O' means output):

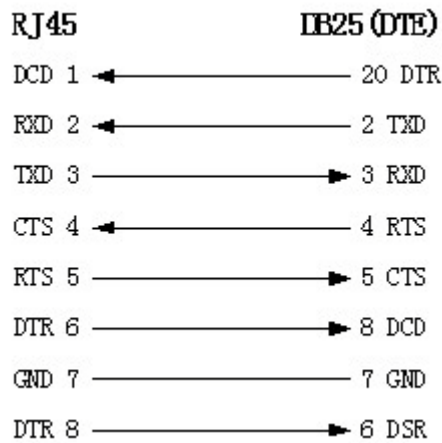
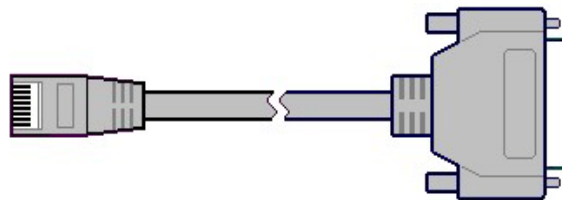
Table 2.1 Pin definition of RS232 serial port



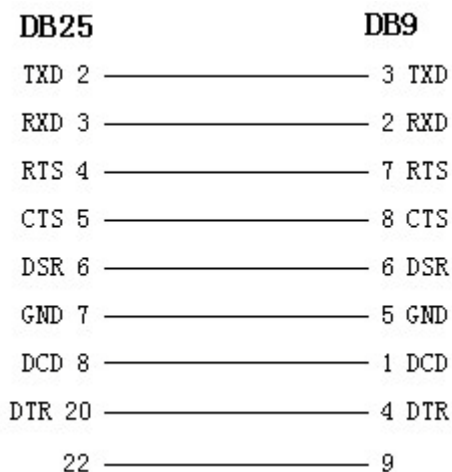
Fig 2.1 RJ-45

| Pin No | Name | I/O | Explanation |
|--------|------|-----|---------------------|
| 1 | DCD | I | Carrier Detect |
| 2 | RxD | I | Receive |
| 3 | TxD | O | Transmit |
| 4 | CTS | I | Clear send |
| 5 | RTS | O | Request to send |
| 6 | DTR | O | Data Terminal Ready |
| 7 | GND | | GND |
| 8 | | | |

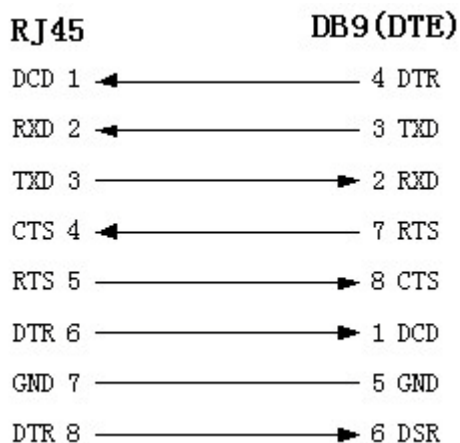
(1) When the RS232 interface of the DVS connects with the DTE equipment, one end of the cable is the 8-pin RJ45 connector (to DVS) and the other of the cable is the DB25 female connector (to DTE). Below is the description of the internal connection between RJ45 and DB25.



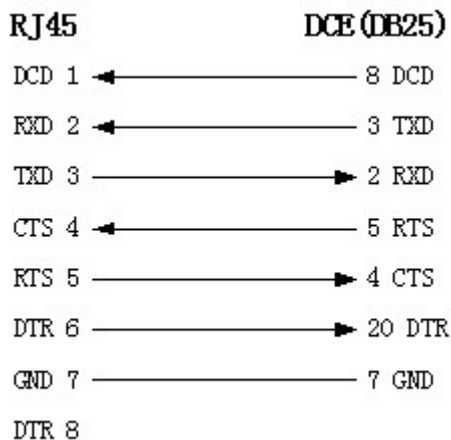
(2) 25-pin to 9-pin converter's internal connection is like this:



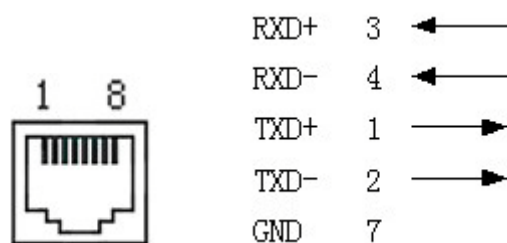
(3) If you don't want to use 25-pin to 9-pin convertor to connect DVS and DTE through RS232 interface, you must use RJ45-DB9 cable. Its internal connection description is:



(4) When the RS232 interface of the DVS connects with the DCE (such as MODEM), one end of the cable is the 8-pin RJ45 connector and the other is the DB25 male connector. Below is the description of the internal connection between RJ45 and DB25:

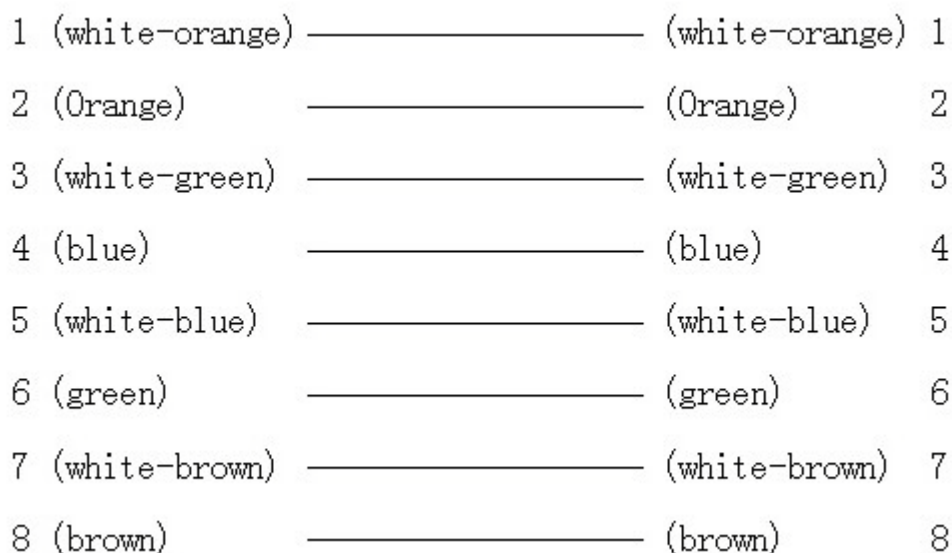


2.3.2 PIN definition of RS485 serial interface

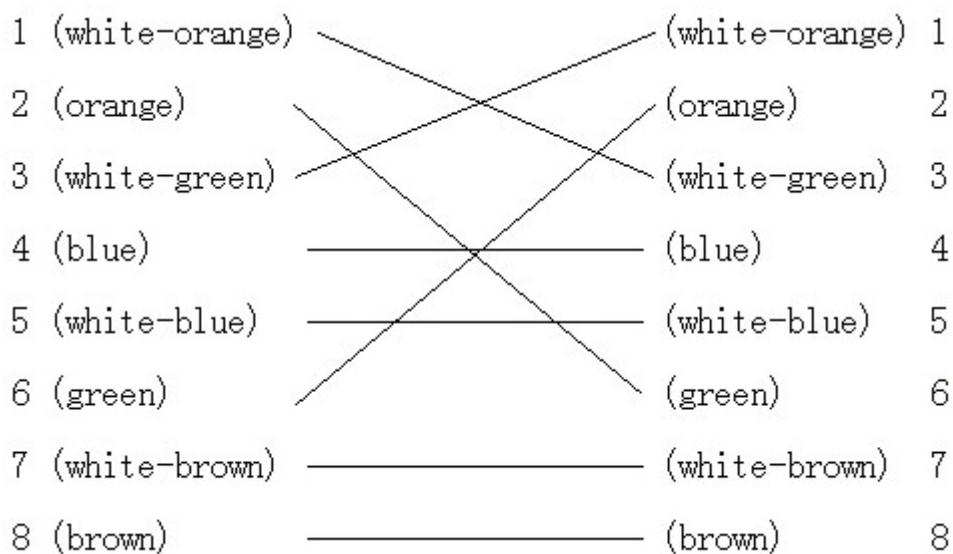


2.3.3 PIN definition of Ethernet interface

(1) PIN definition of the direct network cable connecting DVS and HUB:



(2) PIN definition of the cross network cable connecting DVS and host PC:



Chapter 3 Video Server Setup

There are three kinds of methods to configure the parameters of video server.

1. Through Hyper Terminal (connect DVS with the PC through RE-232 serial ports)
2. Through TELNET (connect DVS with PC through network)
3. Through client-end application software (connect DVS with PC through network)

3.1 Parameter Setup through RS-232 serial port

Please direct connect the RS-232 serial port of PC with the RS-232 serial port of video server before configuration (there are RJ45 head and DB9 line in the packing carton)

How to establish the connection with the super terminal connection?

Step one: Enter into Hyper Terminal. Click “Start” → “Programs” → “Accessories” → “Communications” → “Hyper Terminal” in Windows system, and the dialogue box below will appear (Fig. 3.1):



Fig. 3.1 Newly establish a connection and define the name and icon

Step2: To name the connection name and to define the icon. Input a name (e.g. aa), select a icon, press “OK”, the dialogue box like Fig. 3.2 appears.



Fig. 3.2 Select communication port

Step 3”: to select the communication port. Select “com1” communication port in Fig3.2, press “OK”, the dialogue box as Fig. 3.3 will appear.

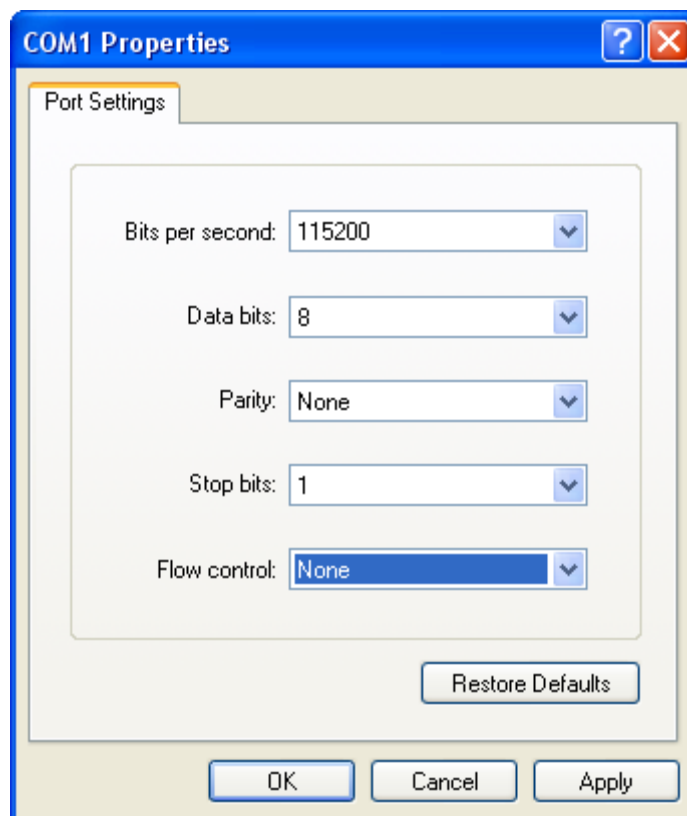


Fig. 3.3 Serial ports parameter setup

Step 4: Serial port parameters setup. Set the serial port parameters as the following setup: Bits per second: 115200, Data bits: 8, Parity: None, Stop bits: 1, Flow control: None. Press “OK” after finish, the Hyper Terminal interface like Fig. 3.4 will appear

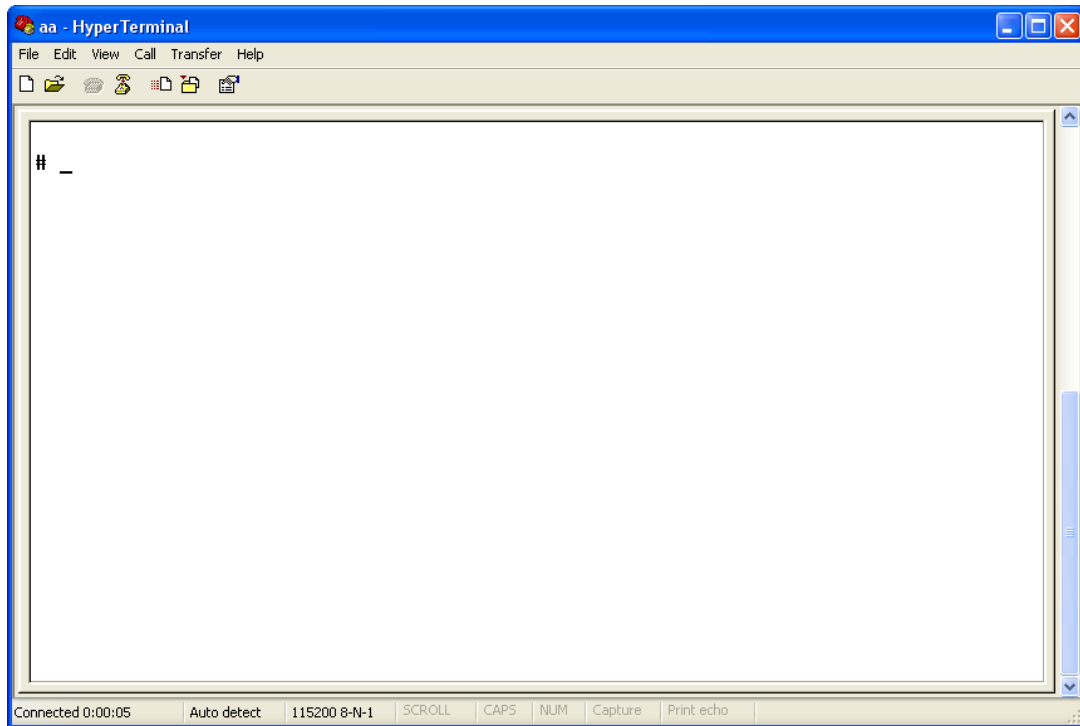


Fig. 3.4 Hyper Terminal Interface

Step 5: To close the window, the Fig. 3.5 will appear. Select “Yes” and Fig. 3.6 will appear:

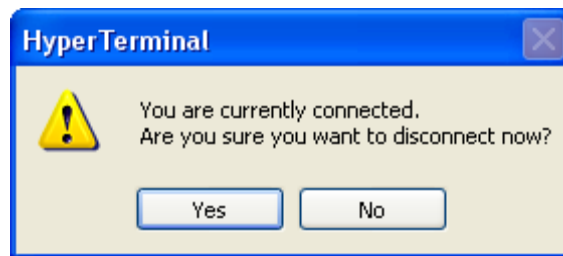


Fig. 3.5 Disconnect

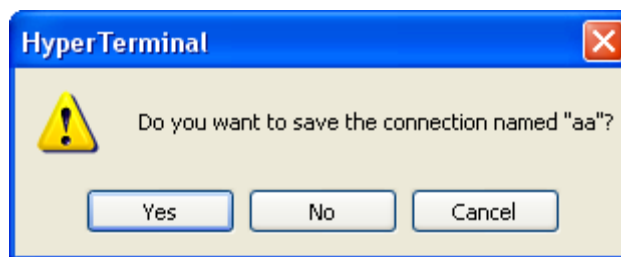


Fig. 3.6 Save Hyper Terminal session

Step 6: Save the Hyper Terminal session for using next time. After saving, it will new establish a “Hyper Terminal” item in the program group “Start” → “Programs” → “Accessories” → “Communications” → “Hyper Terminal” and it includes all “Connection” name for all Hyper Terminal. Here you have see “aa.ht”.

3.1.2 Shell Commands under Hyper Terminal

Please use the DTE cable and the DB9/DB25 convertor to connect PC with DVS RS-232 port.

Step 1: Enter into the Hyper Terminal. Click “Start”→ “Programs”→ “Accessories”→ “Communications”→ “Hyper Terminal”→ “aa.ht”, the Hyper Terminal interface in Fig. 3.4 will appear.

Step 2: Press “Enter” in Hyper Terminal, the prompt “#” appear, as in Fig. 3.7. Under this prompt the following operation commands to accomplish the setup of the parameters.

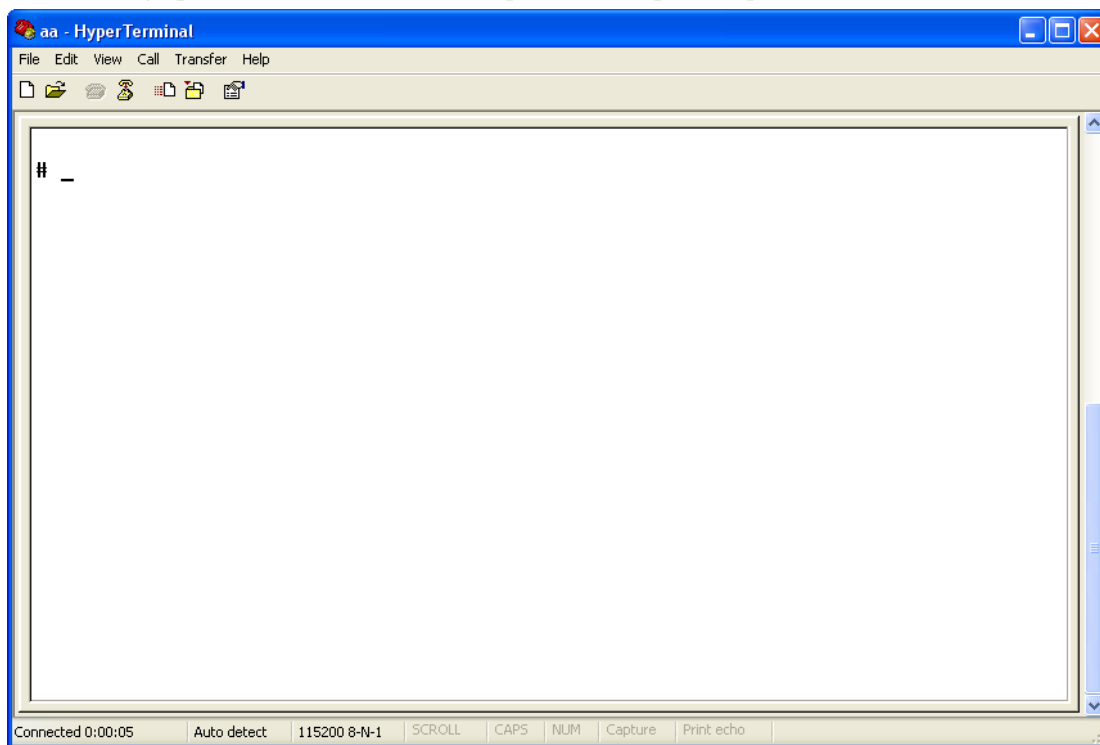
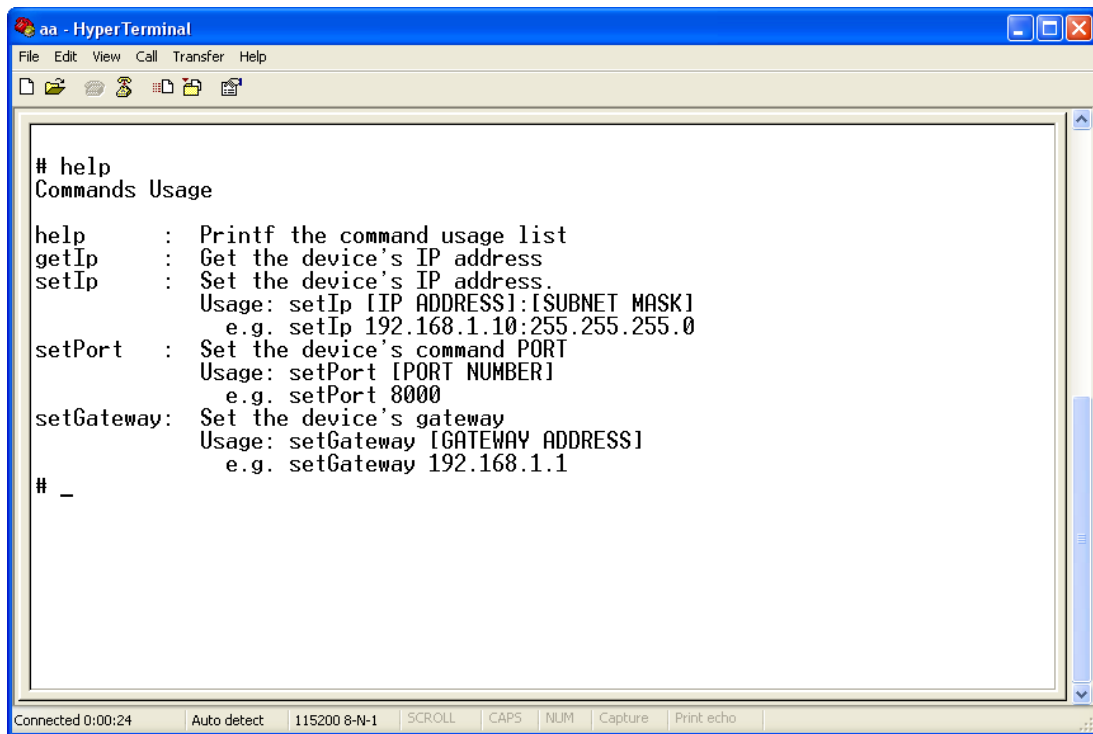


Fig. 3.7 Hyper Terminal command prompt

Input help, the supported configuration commands can be checked up, as in Fig. 3.8.



```
# help
Commands Usage

help      : Printf the command usage list
getIp     : Get the device's IP address
setIp     : Set the device's IP address.
           Usage: setIp [IP ADDRESS]:[SUBNET MASK]
           e.g. setIp 192.168.1.10:255.255.0
setPort   : Set the device's command PORT
           Usage: setPort [PORT NUMBER]
           e.g. setPort 8000
setGateway: Set the device's gateway
           Usage: setGateway [GATEWAY ADDRESS]
           e.g. setGateway 192.168.1.1
# _
```

Fig. 3.8 Check command

The following is the introduction of getIp, setIp commands.

getIp

Function: get the fixed IP, subnet mask, gateway, command port, IP address of PPPoE dialup (the IP address of PPPoE will be 0.0.0.0 if there is no dialup or dialup is not successful).

Parameter: none.

Grammar format: Enter after input the command

Explanation: Please pay attention whether the inputting letters are capital or low case.

```

aa - HyperTerminal
File Edit View Call Transfer Help

# help
Commands Usage

help      : Printf the command usage list
getIp     : Get the device's IP address
setIp     : Set the device's IP address.
           Usage: setIp [IP ADDRESS]:[SUBNET MASK]
           e.g. setIp 192.168.1.10:255.255.255.0
setPort   : Set the device's command PORT
           Usage: setPort [PORT NUMBER]
           e.g. setPort 8000
setGateway: Set the device's gateway
           Usage: setGateway [GATEWAY ADDRESS]
           e.g. setGateway 192.168.1.1

# getIp
IP addresss: 192.0.0.64
Subnet mask: 255.255.255.0

# _

Connected 0:02:34  Auto detect  115200 8-N-1  SCROLL  CAPS  NUM  Capture  Print echo

```

Fig. 3.9 Get parameters of IP, PPPoE

setIp

Function: set the IP, subnet mask and gateway of the device

Parameter: IP address, subnet mask, gateway

Grammar format: setIp IP: mask

Explanation: Please pay attention whether the inputting letters are capital or low case. And separate the parameters by colons.

```

aa - HyperTerminal
File Edit View Call Transfer Help

# help
Commands Usage

help      : Printf the command usage list
getIp     : Get the device's IP address
setIp     : Set the device's IP address.
           Usage: setIp [IP ADDRESS]:[SUBNET MASK]
           e.g. setIp 192.168.1.10:255.255.255.0
setPort   : Set the device's command PORT
           Usage: setPort [PORT NUMBER]
           e.g. setPort 8000
setGateway: Set the device's gateway
           Usage: setGateway [GATEWAY ADDRESS]
           e.g. setGateway 192.168.1.1

# getIp
IP addresss: 192.0.0.64
Subnet mask: 255.255.255.0

# setIp 192.0.0.100:255.255.255.0

# _

Connected 0:03:31  Auto detect  115200 8-N-1  SCROLL  CAPS  NUM  Capture  Print echo

```

Fig. 3.10 Set IP

3.2 Video Server HDD format

Please refer to chapter 3.1 to get video server IP address. Then use remote client software to access video server. Please refer to client software user manual for detail information.

3.3 Video Server Recording Setup

Please use remote client software to remote setup video server local recording parameters.

3.4 PTZ control

Step1: Connect DS-6104HCI RS-485 interface with PTZ. Please refer to RS-485 pin definition. DVS just uses Pin8 (TX+) and Pin7 (TX-) to send PTZ control command.

Step2: You can use remote client software to setup PTZ protocol.

In client software remote “Local Configure” dialog box, select “COM configuration” tab button. You can select DVS PTZ parameters in the corresponding dialog box.

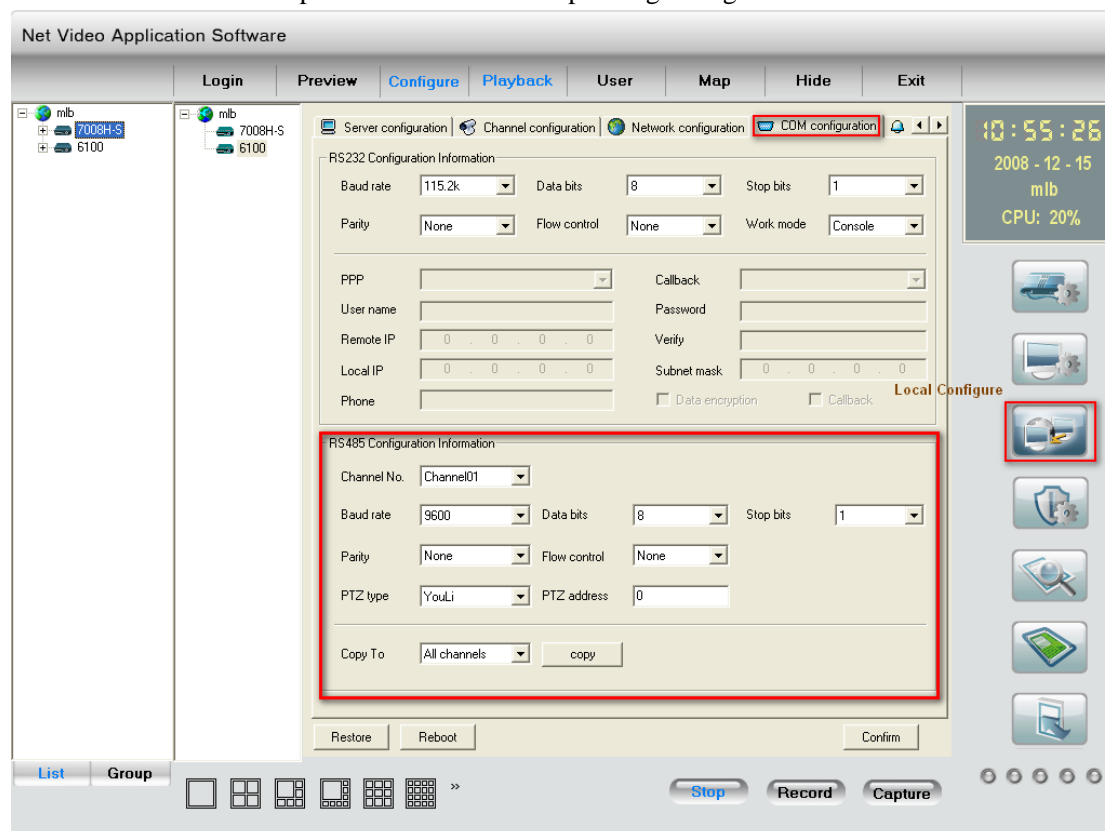


Fig. 3.11 RS-485

Please refer to client software user manual for detail information.

3.5 Remote setup video server parameters

Before the configuration, please make sure that the PC and the video server has been established the network connection, you can confirm using PING command. Please refer to the user manual of DVRDVS client software for detail information.

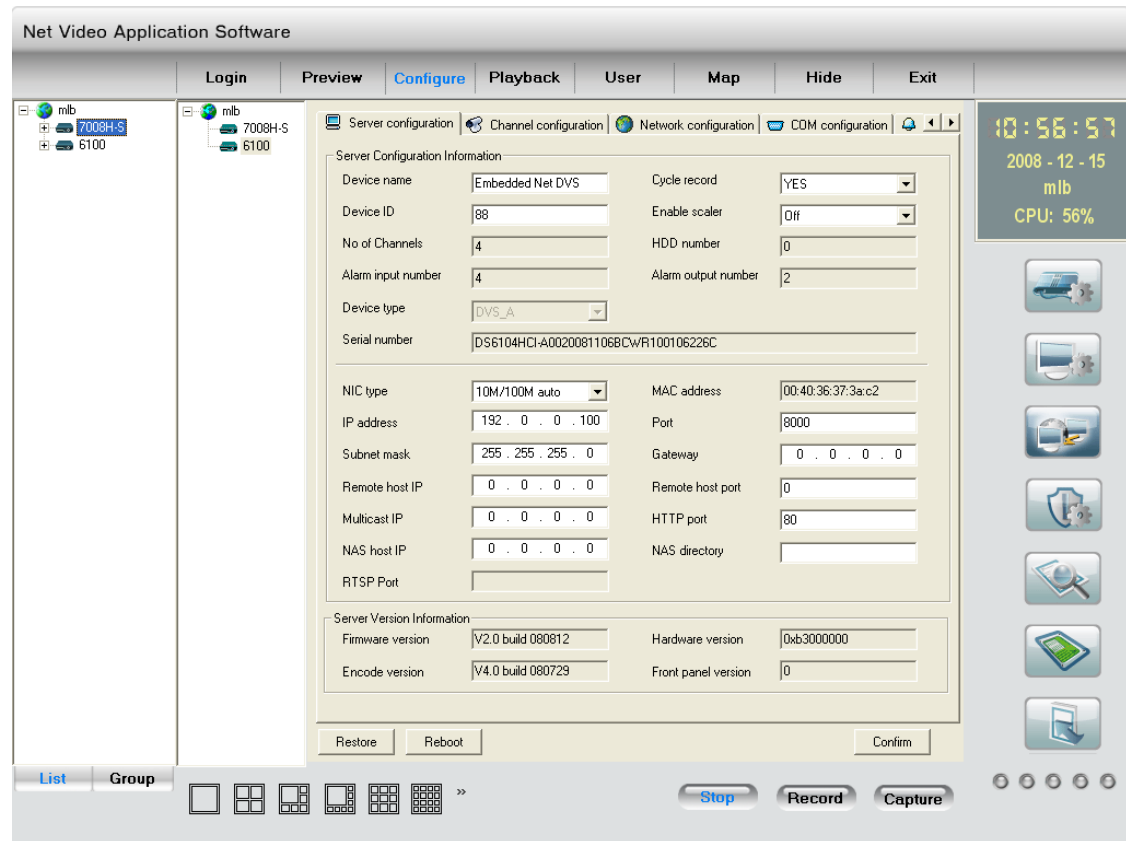


Fig.3.12 Server Configuration

Chapter 4 Upgrade Firmware

There are two methods to upgrade the DVS firmware. One is using shell commands to ask DVS to download firmware from TFTP server. The other is using PC client software.

4.1 Use Shell Command and TFTP Server

Step 1:

Before the update start you should do the follow steps:

1. Download the TFTP server from the internet, such as Cisco TFTP Server. Then put the firmware in the root directory of the Cisco TFTP Server.
2. Connect the device to the Router.
3. Please use DTE cable to connect device 232 port with COM port of the server PC.
4. Configure the Hyper Terminal. Steps as below.

Enter into start----all programs----accessories-----communications-----hyper terminal. Click hyper terminal.

- 1) Input the name “aa”. And do the step 1 again. Then enter into Fig 4.2. Select COM1 and click “OK” to enter into Fig 3.



Fig 4.1



Fig 4.2

- 2) Modify the bits per second to ‘115200’. and modify the flow control to ‘None.’ Finally click “apply” and “ok” to enter into the hyper terminal main interface.

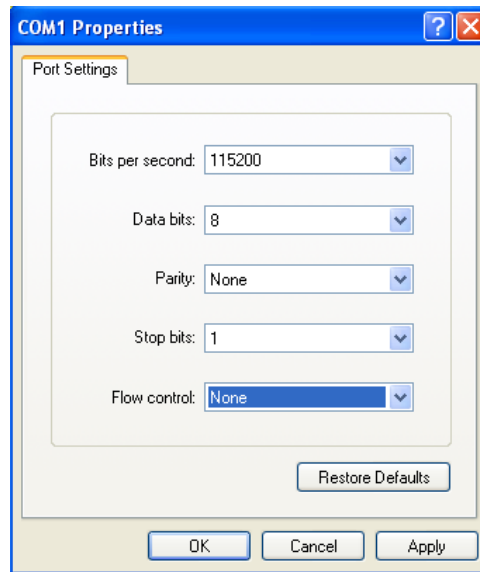


Fig 4.3

Step 2:

Then reboot the device and press any button in the pc keyboard again and again until the HIK # come out in the Hyper Terminal interface, show as Fig 4.4. Then input the “print” to check if the IP of the server and device is correct, also both of them should be in the same LAN. you can use the command

“set serverip” to modified the server ip

“set ipaddr” to modified the device ip

“set netmask” to modified the mask ip

Show as the Fig.4.5.

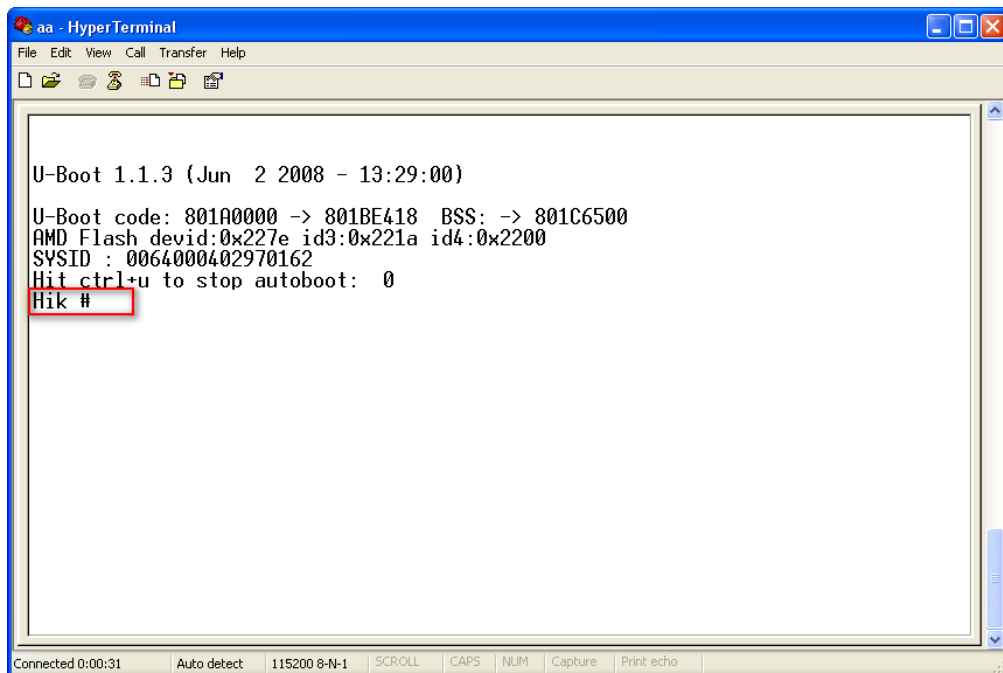


Fig 4.4

```

aa - HyperTerminal
File Edit View Call Transfer Help
U-Boot 1.1.3 (Jun  2 2008 - 13:29:00)
U-Boot code: 801A0000 -> 801BE418 BSS: -> 801C6500
AMD Flash devid:0x227e id3:0x221a id4:0x2200
SYSID : 0064000402970162
Hit ctrl+u to stop autoboot:  0
Hik # set serverip 192.0.0.1
Hik # set ipaddr 192.0.0.64
Hik # set netmask 255.255.255.0
Hik # save
Saving Environment to Flash...
<yxq_info> the config command is 0x1e0!
Not using the addr redund env!
Un-Protected 1 sectors
Erasing Flash...
Erase Operation Completed.
Erased 1 sectors
Writing to Flash...to addr 0x2020000 len 0x10000-done
Protected 1 sectors
Hik # _

```

Fig 4.5

Step 3:

Input command “save” and press enter button. Show as Fig.4.5.

Step 4:

Input the command “update” and press enter button, then space button. After that the update will start. Show as Fig.4.6

```

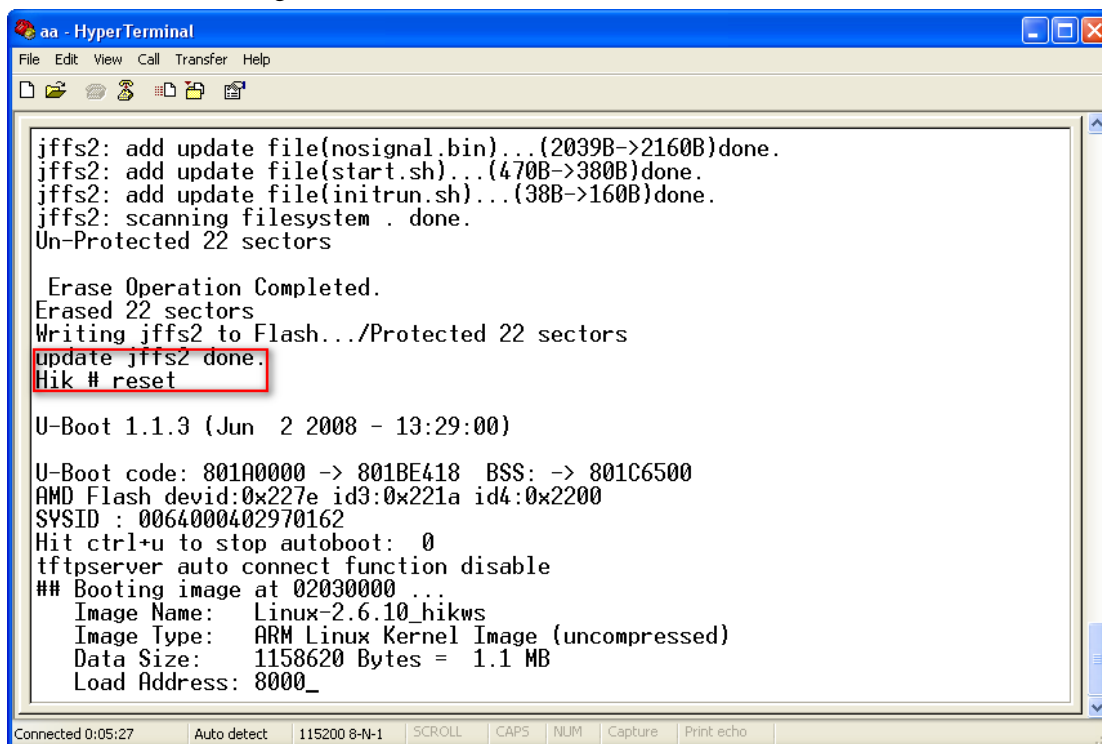
aa - HyperTerminal
File Edit View Call Transfer Help
Hik # set netmask 255.255.255.0
Hik # save
Saving Environment to Flash...
<yxq_info> the config command is 0x1e0!
Not using the addr redund env!
Un-Protected 1 sectors
Erasing Flash...
Erase Operation Completed.
Erased 1 sectors
Writing to Flash...to addr 0x2020000 len 0x10000-done
Protected 1 sectors
Hik # update
Update flash.
*****
* ATTENTION!! PLEASE READ THIS NOTICE CAREFULLY! *
* don't reset machine,or anything that interrupt it *
* if this program fails,machine might be unusable, *
* and you will need to reflash again. *
* if you find this too risky,power off machine now. *
* or press the SPACE key now to start. *
*****
This program will update digicap.dav.
_

```

Fig. 4.6

Step 5:

After the update finished, please input the command “reset” and press the enter button. The device will reset. Show as Fig.4.7.

The image shows a HyperTerminal window titled "aa - HyperTerminal". The window contains the following text output:

```
jffs2: add update file(nosignal.bin)...(2039B->2160B)done.
jffs2: add update file(start.sh)...(470B->380B)done.
jffs2: add update file(initrn.sh)...(38B->160B)done.
jffs2: scanning filesystem . done.
Un-Protected 22 sectors

Erase Operation Completed.
Erased 22 sectors
Writing jffs2 to Flash.../Protected 22 sectors
update jffs2 done.
Hik # reset

U-Boot 1.1.3 (Jun  2 2008 - 13:29:00)

U-Boot code: 801A0000 -> 801BE418 BSS: -> 801C6500
AMD Flash devid:0x227e id3:0x221a id4:0x2200
SYSID : 0064000402970162
Hit ctrl+u to stop autoboot: 0
tftpserver auto connect function disable
## Booting image at 02030000 ...
Image Name:   Linux-2.6.10_hikws
Image Type:   ARM Linux Kernel Image (uncompressed)
Data Size:    1158620 Bytes = 1.1 MB
Load Address: 8000_
```

The text "update jffs2 done." and "Hik # reset" are highlighted with a red rectangular box. At the bottom of the window, there is a status bar with the text "Connected 0:05:27", "Auto detect", "115200 8-N-1", "SCROLL", "CAPS", "NUM", "Capture", and "Print echo".

Fig 4.7

4.2 Use Client Software to upgrade firmware

In the system setup dialog of DVRDVS client software (refer to client software user manual), there is a button named “Other”:

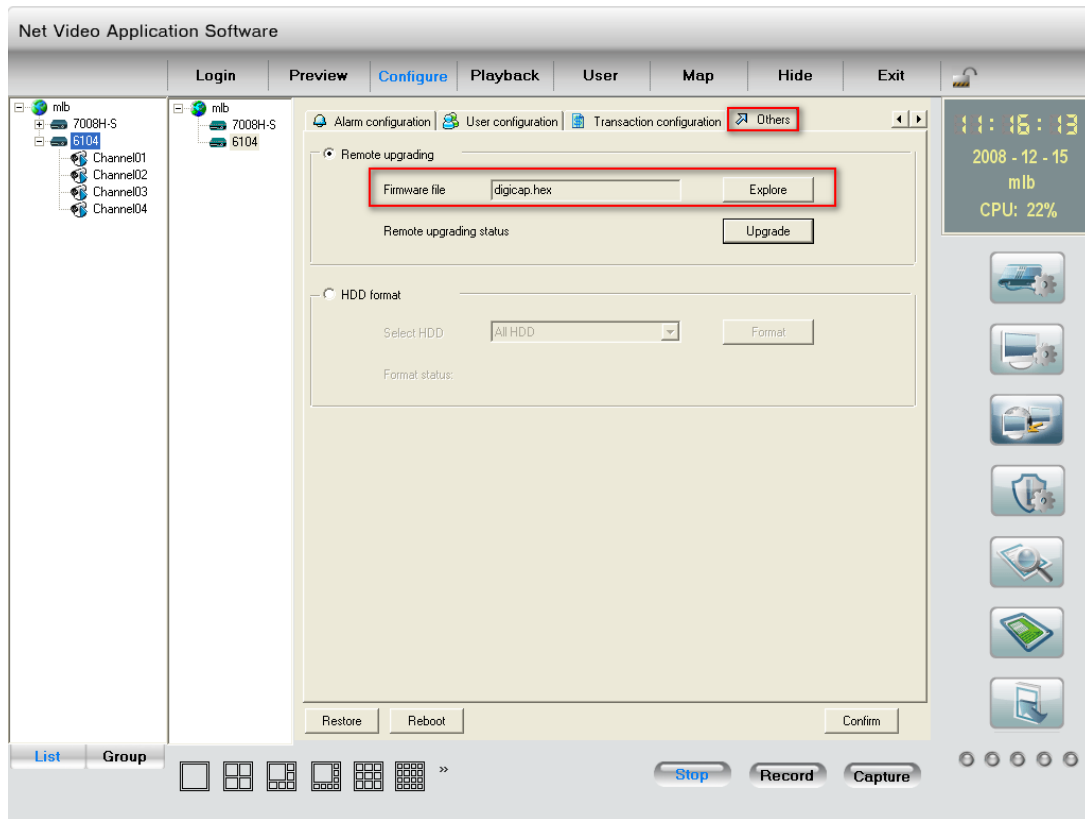


Fig.4.8 Remote upgrading

Click “Explore” button and select the firmware file.

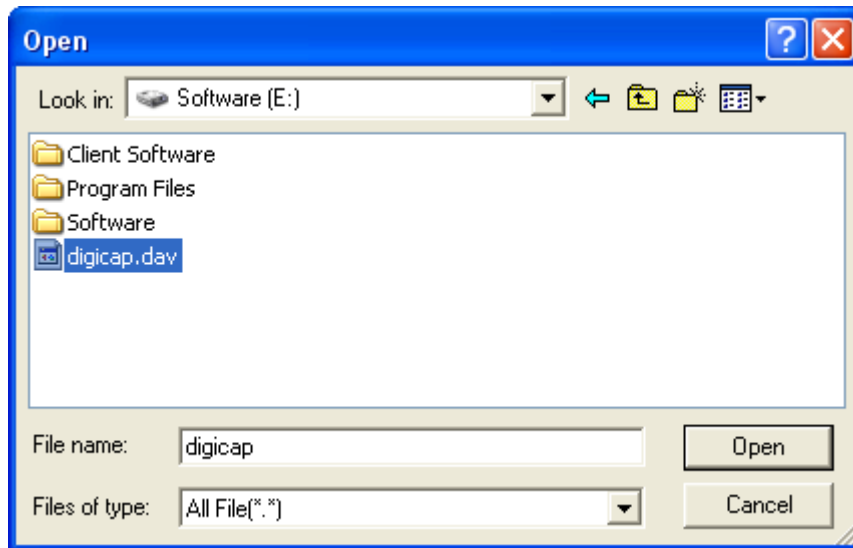


Fig.4.9

Then click “Upgrade” button, to complete the upgrading process of the video server firmware.

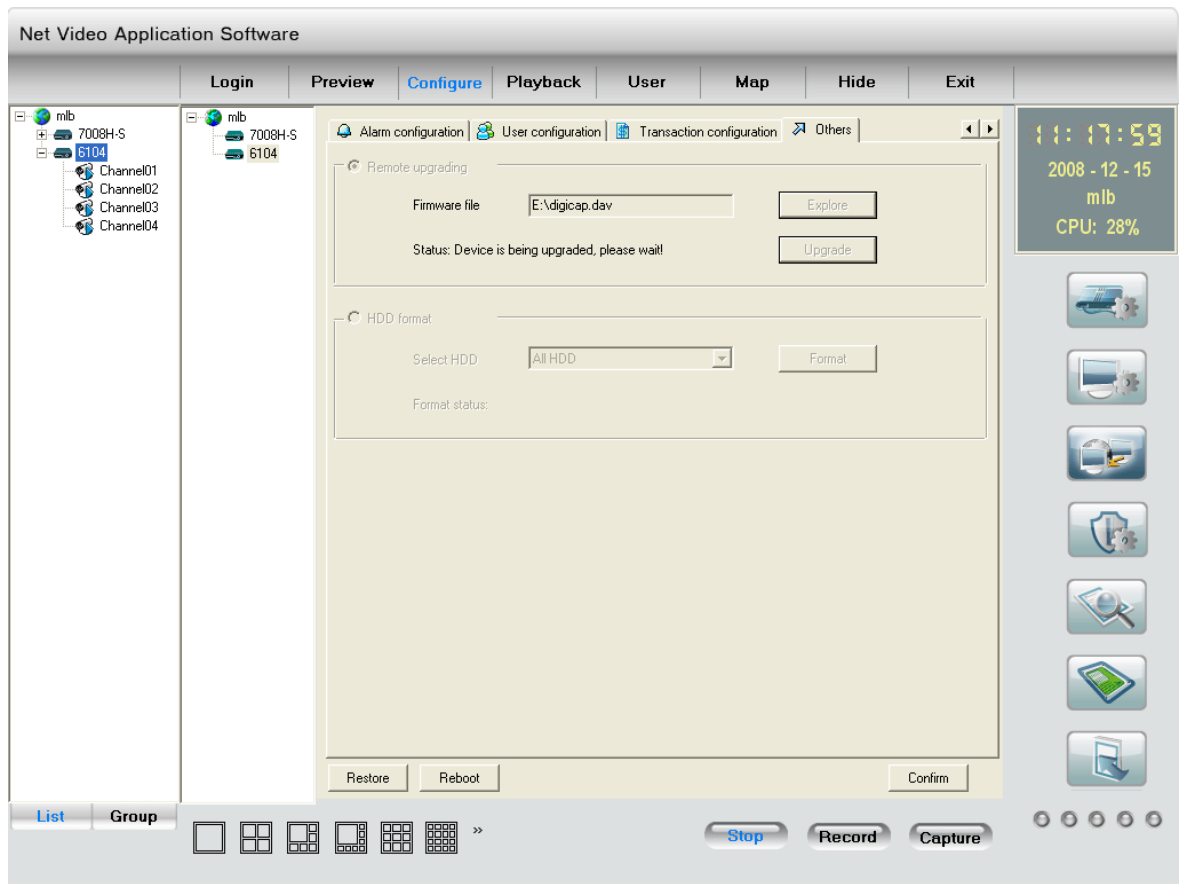


Fig.4.10

Chapter 5 PPPoE Dialup Operation

DS-6104HCI video server supports remote access through network, through browser, through PPPoE or PPP dialup. Before using this function, please make sure that the software you used in your device support such functions or not.

5.1 Using PPPoE to establish connection

In the local LAN, use the client software remote setup the DVS parameters. The setup dialog is looked as following:

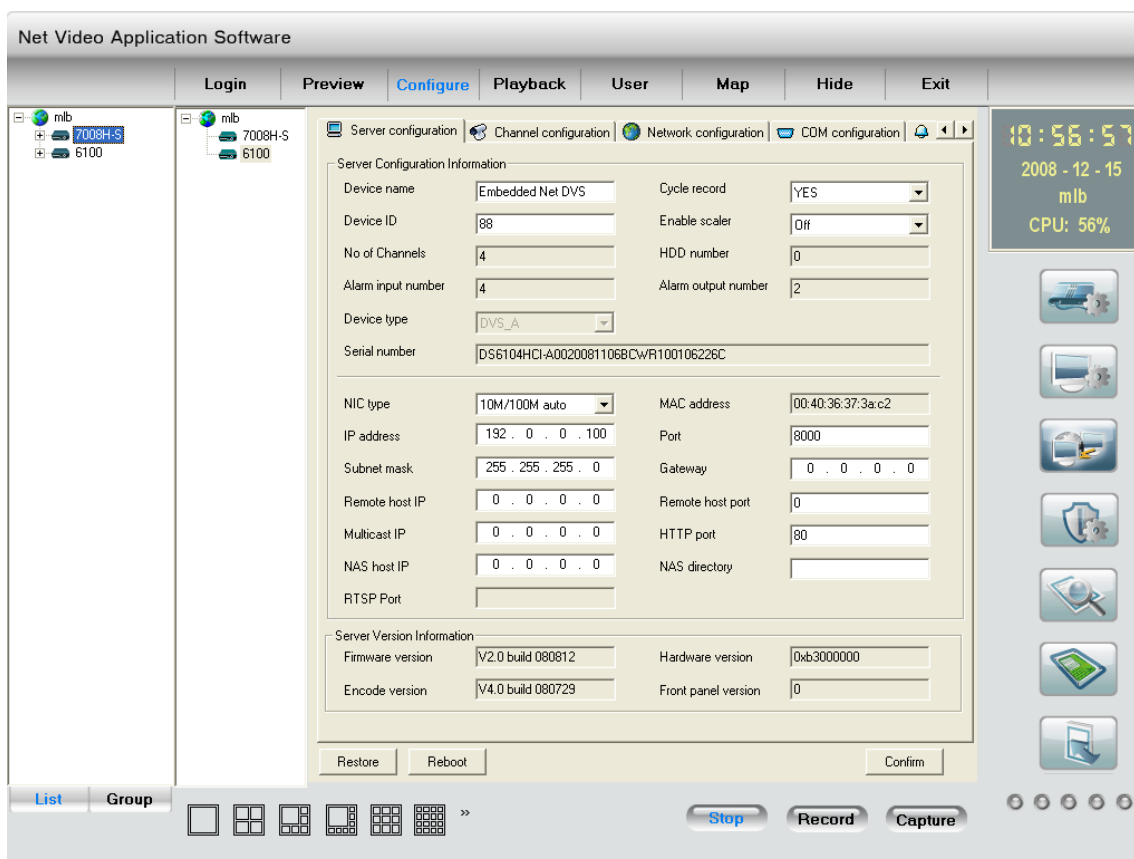


Fig.5.1

In the server parameters sub dialog, enable PPPoE function, input the correct PPPoE user name and PPPoE password. Click “Confirm” button and “Save Para.” button. The new server parameters will be saved into video server through network. Reboot the video server, the DVS will start to dialup the internet. After success, the video server will get a dynamic WAN IP address.

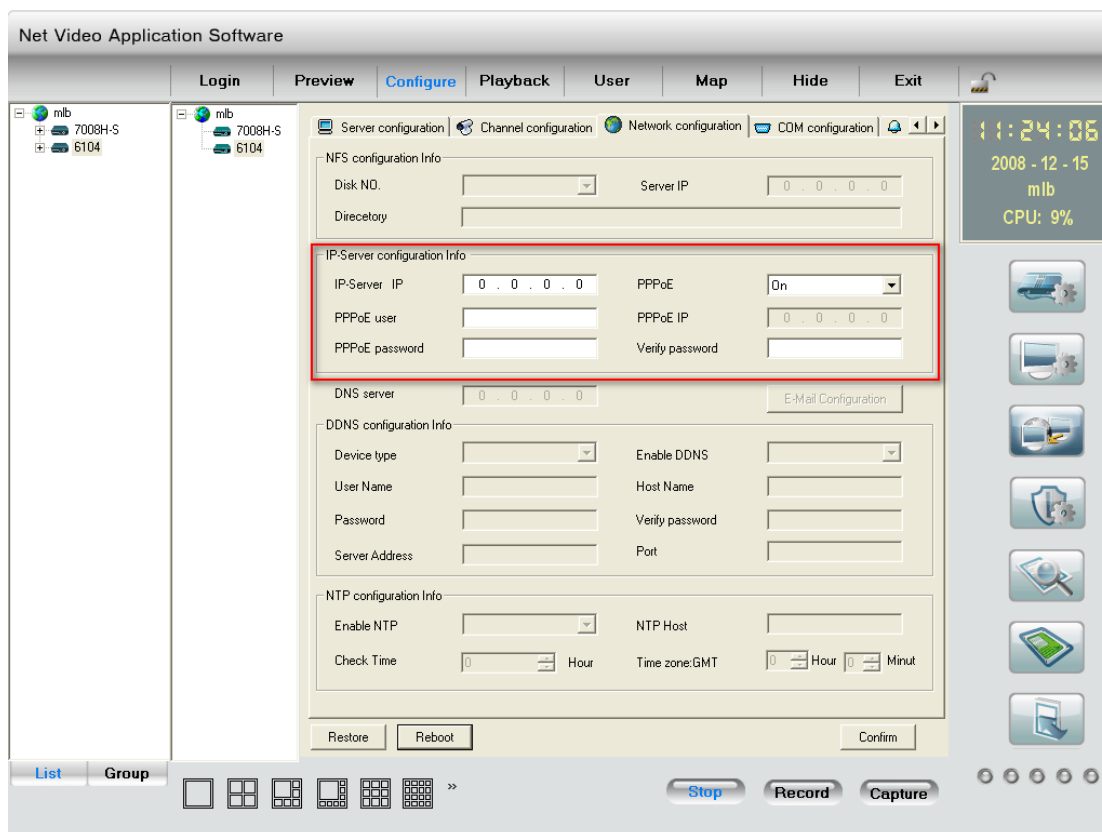


Fig.5.2

[Explanation] please make sure that ADSL Modem is installed. If it is the first time to set PPPoE parameters, it needs to reboot video server to establish the connection.

5.2 Client access DVS when using PPPoE

There are two methods:

One is to access using the current WAN IP address of the video server.

When the video server is successful establish the network connection by using PPPoE mode, it will get the WAN IP address. You can use Hyper Terminal to get the WAN IP address, and access this IP address through client software.

The other is to access through domain analysis server. By using this mode, you need a PC with a fixed WAN IP address in the Internet, and there is the domain analysis server software running in this PC (actually this PC is the analysis server). We provide such demo DNS software and SDK.

In the server parameters of video server, there is an item named DNS. Please input the PC fixed WAN IP address here. When the video server is successfully connection with the internet by using PPPoE, it will get a dynamic WAN IP address, and send the name and current IP address to the analysis server. If the client-end software wants to access the video server, it'd first to connect with the PC used as the analysis server, telling the analysis server which one video server he wants to access. The analysis server will search all the video servers have been registered, find out the server with the same name or same serial number, and tell the client-end the WAN IP address of the video server. After the client-end software get the current IP address, it can establish

the network connection with the video server to get the video images directly.

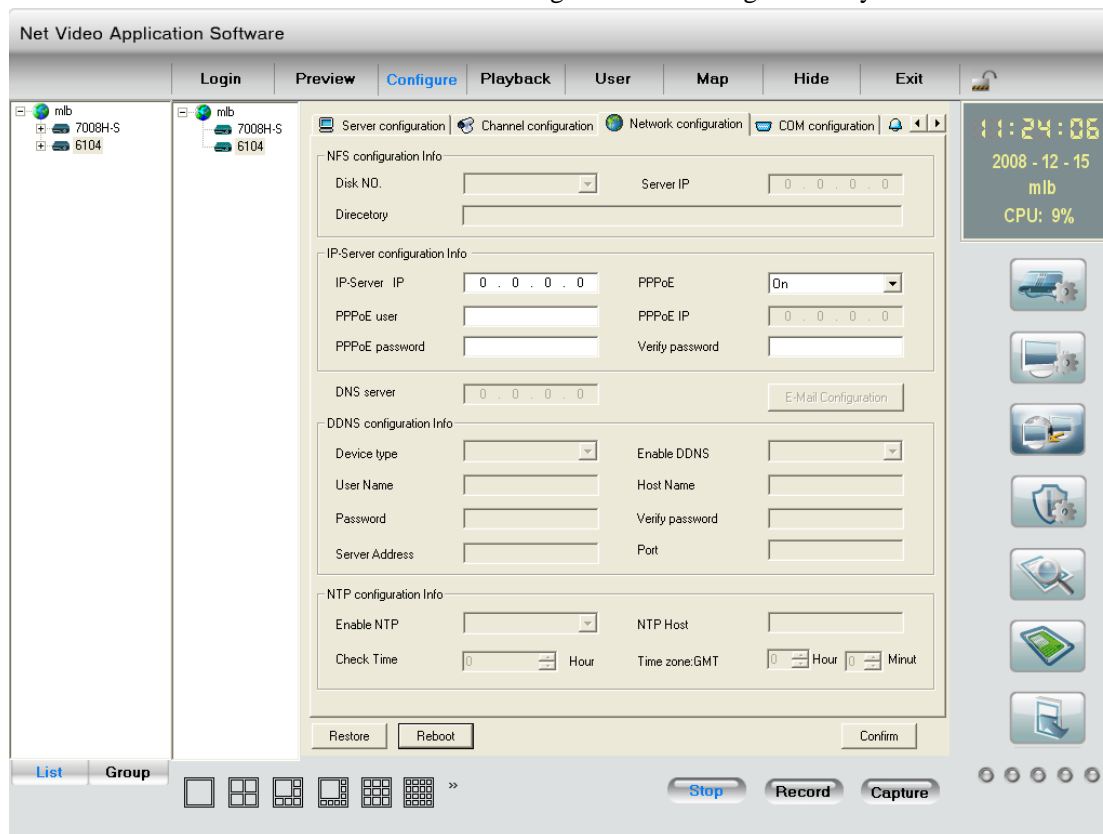


Fig.5.3

Here the fixed WAN IP address of PC is 220.184.114.48. We call it as DNS IP. In that the PC, one demo analysis server software named IP Server is run. It can get the video server information, including the dynamic WAN IP address of the video server.

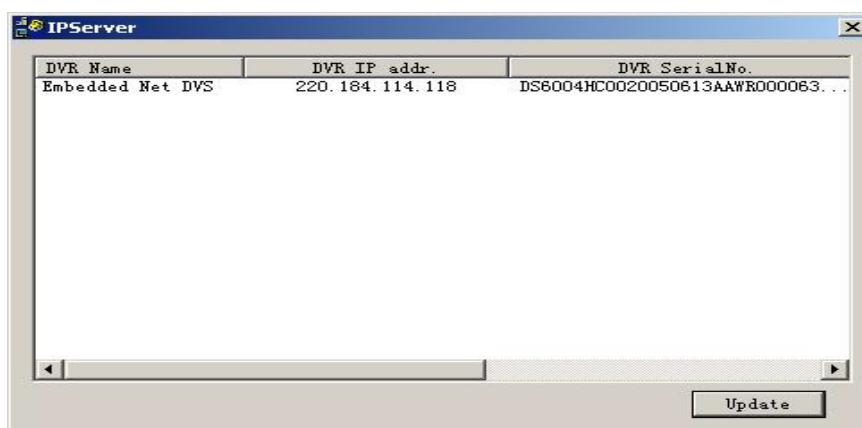


Fig.5.4

Chapter 6 Frequent ask questions

1, Failure to control PTZ

It is possible that the camera and equipment are not connected through RS485 port, or the wrong configuration of the decoder.

2,certain individual channel picture is un-normal

Please check whether the video cable is well connected with the camera and the Embedded DVS

3,Possible reasons which can cause the failure of upgrading

Failure of the network, IP address error in the FTP host computer, FTP service is not been booted by PC, the path to upgrade is incorrect; no permission (usually happened when to upgrade through client-end.)

If the above information cannot meet your demand, please not hesitate to contact the provider.

Appendix A DS-6104HCI Specifications

| | |
|---------------------------------|--|
| Model | DS-6104HCI |
| Video compression | H.264 |
| Encode/Decode resolution | 4CIF/DCIF/2CIF/CIF/QCIF |
| Video input | 4 |
| Video input interface | BNC (1.0Vp-p, 75Ω), support PAL, NTSC |
| Frame rate (per channel) | 4CIF/DCIF/2CIF: 4fps for 4-ch CIF: 25(P)/30(N) fps |
| Stream type | Video / Video&Audio |
| Support dual stream | Yes |
| Bit rate | 32Kbps~2Mbps adaptive (Max. 8Mbps) |
| Audio input | 4 |
| Audio input interface | BNC (2Vp-p, 1kΩ) |
| Audio output | 1 channel (linear electrical level, 600Ω) |
| Audio compression | OggVorbis, 16Kbps |
| Voice talk input | 1 channel (2Vp-p, 1kΩ) |
| Communication interface | 1 RJ45 10M/100M Adaptive Ethernet interface, 1 RS232 interface and 1 RS485 interface |
| Alarm input | 4 channels |
| Alarm output | 2 channels |
| Power supply | 12V DC |
| Power consumption | ≤7W |
| Working temperature | -10℃~+55℃ |
| Working humidity | 10%~90% |
| Size(mm) | 39mm(H)*198mm(W)*123mm(D) |
| Weight | ≤1 Kg |

Stabilizer power supplier: input AC 100-240V47-63Hz

Appendix B Good list

1. One piece of DS- 6104HCI video server;
2. A CD contains client application;
3. One power supply voltage stabilizer
4. A 220V power cable;
5. A cable connecting RS232 with DTE;

Appendix C Customer Information Card

| | |
|---------------------------------|-----------------|
| User's Name | Mr./Mrs. |
| Company Name | |
| Post Address | |
| Postcode | |
| Phone Number | |
| E-mail | |
| Model Number of Product | |
| Serial Number of Product | |
| Purchase Date | |
| Distributor | |
| Suggestions: | |
| | |